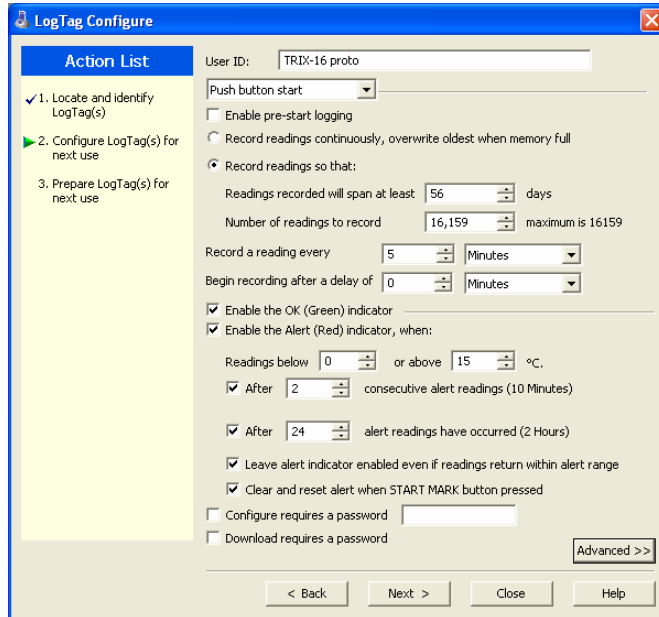


TRIX-8 / TRIX-16 enhanced alert configuration

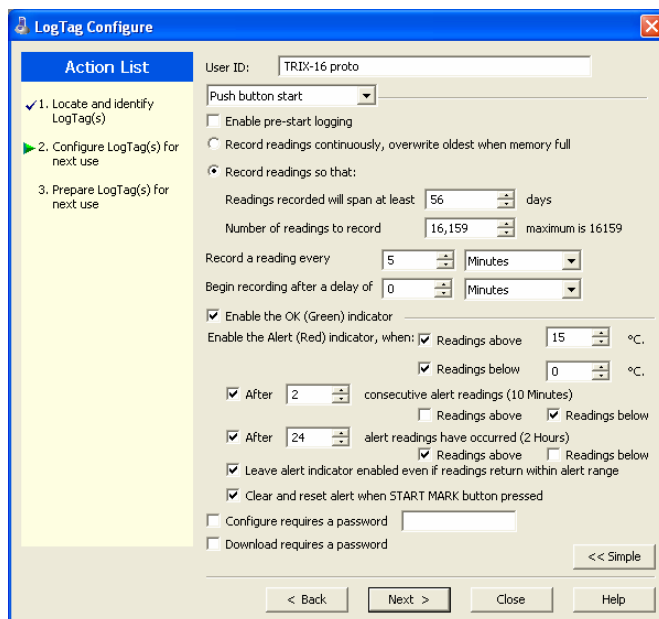
The TRIX-8 and TRIX-16 supports simple or advanced alert configuration options.

In 'simple mode' the TRIX-8 / TRIX-16 configuration dialogue displays the standard alert configuration options.



In this simple mode consecutive or accumulative alerts apply to both upper and lower alert triggers.

If the user clicks on the *Advanced*>> button a more complex dialogue appears ..



In this advanced mode it is possible to associate a given consecutive or accumulative alert to just an upper or lower alert trigger.

An example of a typical application that this advanced alert configuration supports would be a live vaccine where a freezing alert (i.e less than say 0°C) requires either an instant or short consecutive alert trigger and a longer accumulative upper alert trigger.

The above dialogue examples displays an alert configuration that has a low temperature trigger if the temperature falls below 0°C for more that 10minutes and a high temperature trigger if the total accumulated time above 15°C exceeds 2 hours.