

LogTag[®] UTRED30-WiFi

Quick Start Guide

Version D - February 2020

www.logtagrecorders.com

Quick Start Guide Contents

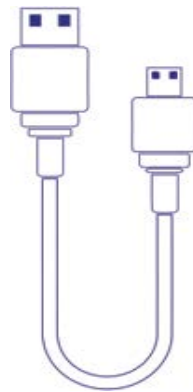
What's Included	3
Battery Installation	4
Downloading LogTag Analyzer	5
Running the Connection Wizard	6
Connecting to your WiFi Network	9
Configuring your UTRED30-WiFi	12
Installing the Wall Mount	13
Starting your UTRED30-WiFi	14
LogTag Online	15

What's Included

Please check you have each of the items shown below before continuing with setting up your UTRED30-WiFi.



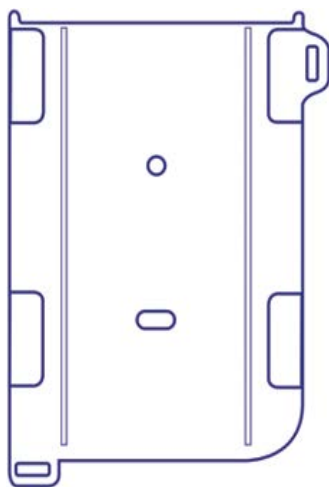
UTRED30-WiFi



USB Cable



External Probe
(Not included)



Wall mount
(Not included)



2x AAA Battery
(Not included)

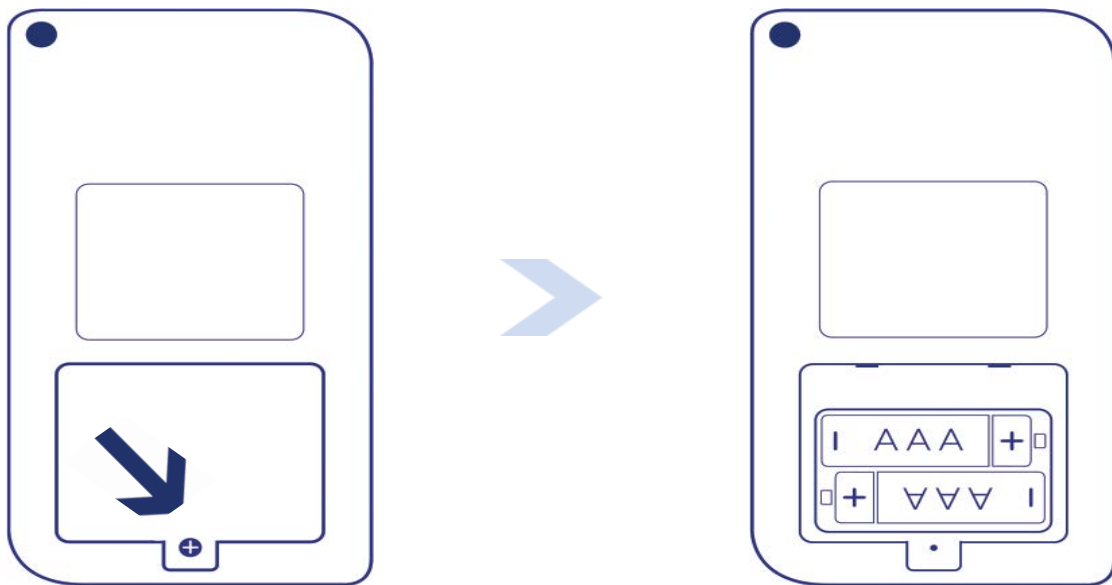
Battery Installation



The USB cable is the main power method to power the UTRED30-WiFi unit permanently via the USB socket.

AAA batteries are another backup power source to ensure your device continues to record in the event of a power outage or is unplugged.

1. You will need a small Phillips (cross-shaped) screwdriver to remove the cover on the back of the UTRED30-WiFi case.



2. Once you have removed the battery cover, install the two AAA batteries. **Take note** of the direction each battery must be installed.
3. Once both batteries are securely installed, **replace the battery cover** and secure via the screw provided.

Downloading LogTag Analyzer

To download the latest LogTag Analyzer, open your browser and navigate to:

 <https://logtagrecorders.com/software/LTA3/>

1. Fill in the form with your details, then click 'Go to downloads page'.
2. Click 'Download Now' to start the download.
3. Click 'Run' or 'Save File' then double-click the downloaded file to open the LogTag Analyzer Setup Wizard.
4. Follow the on-screen prompts to install LogTag Analyzer.
5. Click 'Finish' to exit the Setup Wizard.

Note: If you already have the LogTag Analyzer installed, please see whether you need to update to the latest version by clicking 'Check Internet for updates' from the 'Help' menu.

Warning: Please ensure no other LogTag software is currently running on your computer before running the Analyzer software.

Running the Connection Wizard

Please ensure there is internet connection on your computer prior to starting this process.

The first page of the Wizard will be displayed. When you're ready to begin, click "**Start**".



You will be asked to sign in to your LogTag Online account. If you do not have an account, click the link below or alternatively, open your browser, type the following link into the address bar and follow the on-screen instructions.

<https://logtagonline.com/signup>

Running the Connection Wizard continued...

or click **Create a LogTag Online Account** link.



The screenshot shows a window titled "LogTag® Online Connection Wizard". The window contains the following elements:

- Logo: "LogTag® Online" in blue and black text.
- Text: "Sign in to your LogTag® Online Account below and the Wizard will assist in registering your WiFi device(s). If you do not have an account, click "Create an Account". Return to this Wizard when your account setup is complete."
- Form fields: "EMAIL" and "PASSWORD" labels above two empty text input boxes.
- Link: "[Forgot your Password?](#)" in red text.
- Link: "[Create a LogTag® Online Account](#)" in orange text.
- Footer: "Help Ver: 1.0.6.4" on the left and "Skip" and "SIGN IN" buttons on the right.

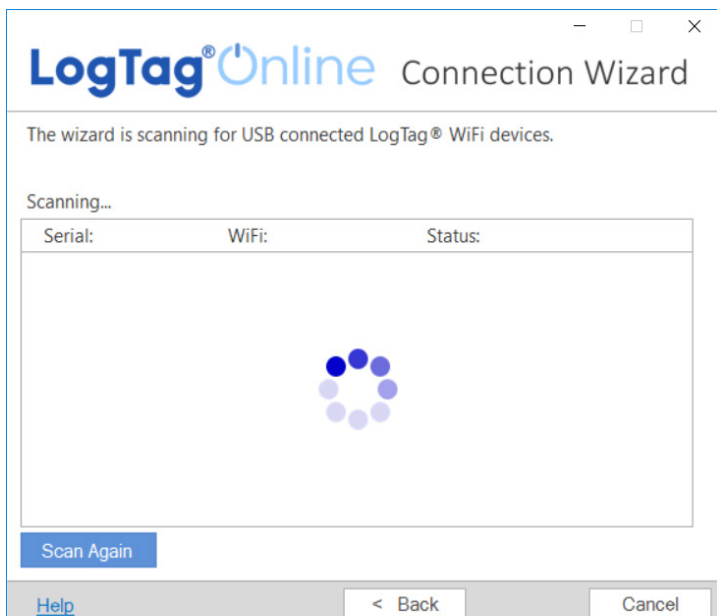
Note: If you 'Skip' this step, you will need to manually register the device on LogTag Online or repeat the LogTag Online Connection Wizard.

Click 'Sign In' after you have entered your login details to continue setting up WiFi on your UTRED30-WiFi.

You have now created your account and is now ready to set up connection of your UTRED30-WiFi to the WiFi network.

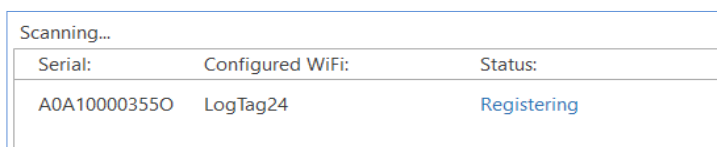
Running the Connection Wizard continued...

You have now created your account and is now ready to set up connection of your UTRED30-WiFi to the WiFi network.



The Wizard will now scan for any connected LogTag devices.

If the scan doesn't find any devices, double-check the device is plugged in to your computer with the USB cable provided and click "Scan Again".



As soon as a device has been identified, it will appear in the table (left) and automatically register that device to your LogTag Online account.



1. Click the Network Name and your WiFi device will begin searching for nearby Wireless Networks.
Note: This process can take up to 2 minutes, please wait whilst the network scan is in progress.
2. Once you have selected your WiFi Network from the list, type the password for the network. **Remember that passwords are case-sensitive.**
3. (Optional) Once you have typed your password, you can click the eye icon to reveal the password. Incorrectly typed passwords is one of the most frequent reasons why device setup fails.
4. Once you have selected your WiFi Network and typed the password, click **"Next"**.

Note: Some WiFi Networks won't appear in this list for security purposes. If you are aware that your network is one of these, you can manually type the name of your network (SSID) in the Network Name field instead of clicking the menu arrow.

The device is now being configured with the WiFi details you provided in the previous screen, which typically takes 10 seconds.

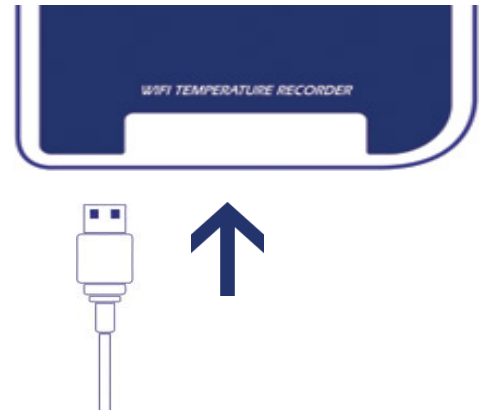
The Connection Wizard is now checking that the UTRED30-WiFi can connect to your WiFi network and to LogTag Online...



Once the Wizard displays “Connection Succeeded”, click “**Close**” to close the Wizard or click the ‘LogTag Online Sign In page’ link to take you to LogTag Online website.

Configuring your UTRED30-WiFi

Connect your UTRED30-WiFi to your computer via the USB cable provided. The USB socket on the device is located on the bottom, protected by a rubber seal.



1. Open LogTag Analyzer.
2. Click 'Configure' from the 'LogTag' menu or click the 'Wizard' icon.
3. Adjust your logger configuration settings as required.
For more information on configuration settings, please refer to [Configuring the UTRED30-WiFi](#) in the Product User Guide or press 'F1' for help.
4. Click 'Configure' to upload the configuration settings to the logger.
6. Click 'Close' to exit the configuration page.

Installing the Wall Mount

Setup of your UTRED30-WiFi is complete.

Attach the Wall Mount Bracket on the side of your refrigerator or freezer, preferably at eye-level with the adhesive strip provided with the Wall Mount.

Before sticking on the Wall Mount, make sure the sensor cable and the USB cable from the UTRED30-WiFi can both reach the device comfortably without obstruction or at risk of being accidentally disconnected if knocked.

Insert the UTRED30-WiFi into the Wall Mount, connect the USB and sensor cables.

The display should show the word “**READY**” as seen in the image (right).

Note: both the cloud and WiFi symbols are showing in the top left with a tick in each to confirm successful setup of the device.



Starting your UTRED30-WiFi

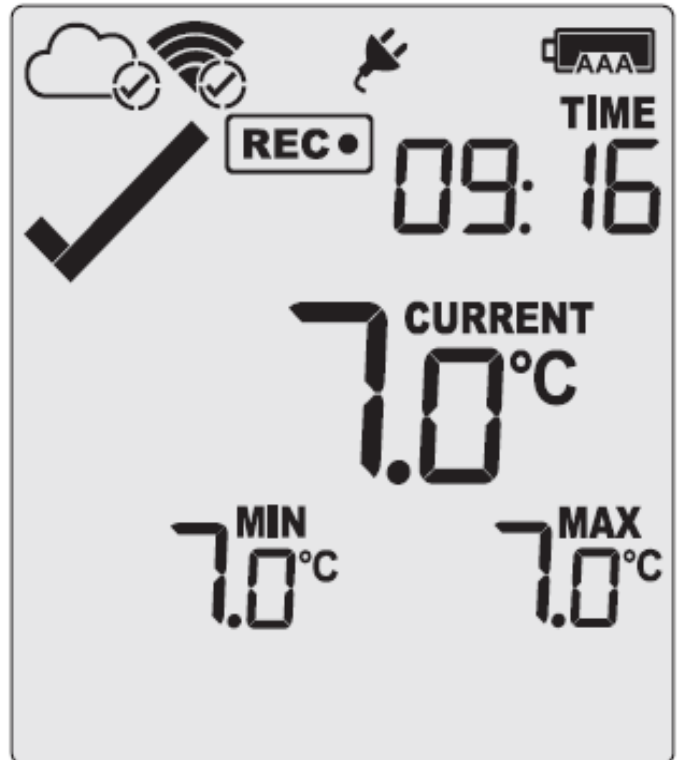
Press and hold the **START/Clear/Stop** button.

STARTING will appear along with **READY**. Release the button once **READY** disappears.

The UTRED30-WiFi now records temperature data.

The Logger will **not** start if:

- You release the button before **READY** disappears.
- You keep holding the button for more than 2 seconds after **READY** disappears.
- The backup battery is critically low and the Logger is not connected to power.



LogTag Online

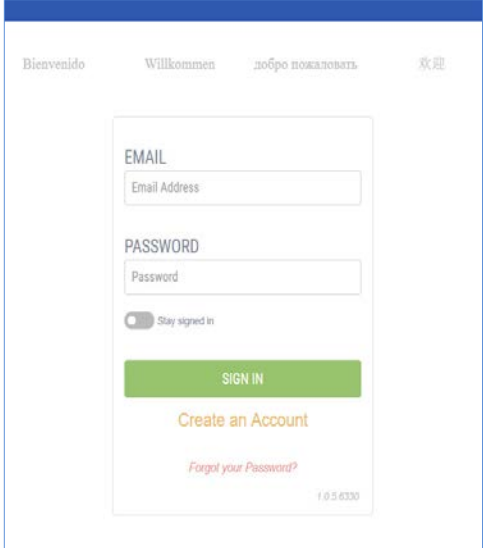
LogTag Online is a secure online service that stores the data recorded from your logger against your account.

Signing in to your LogTag Online Account

Open your browser and navigate to:
<https://logtagonline.com>

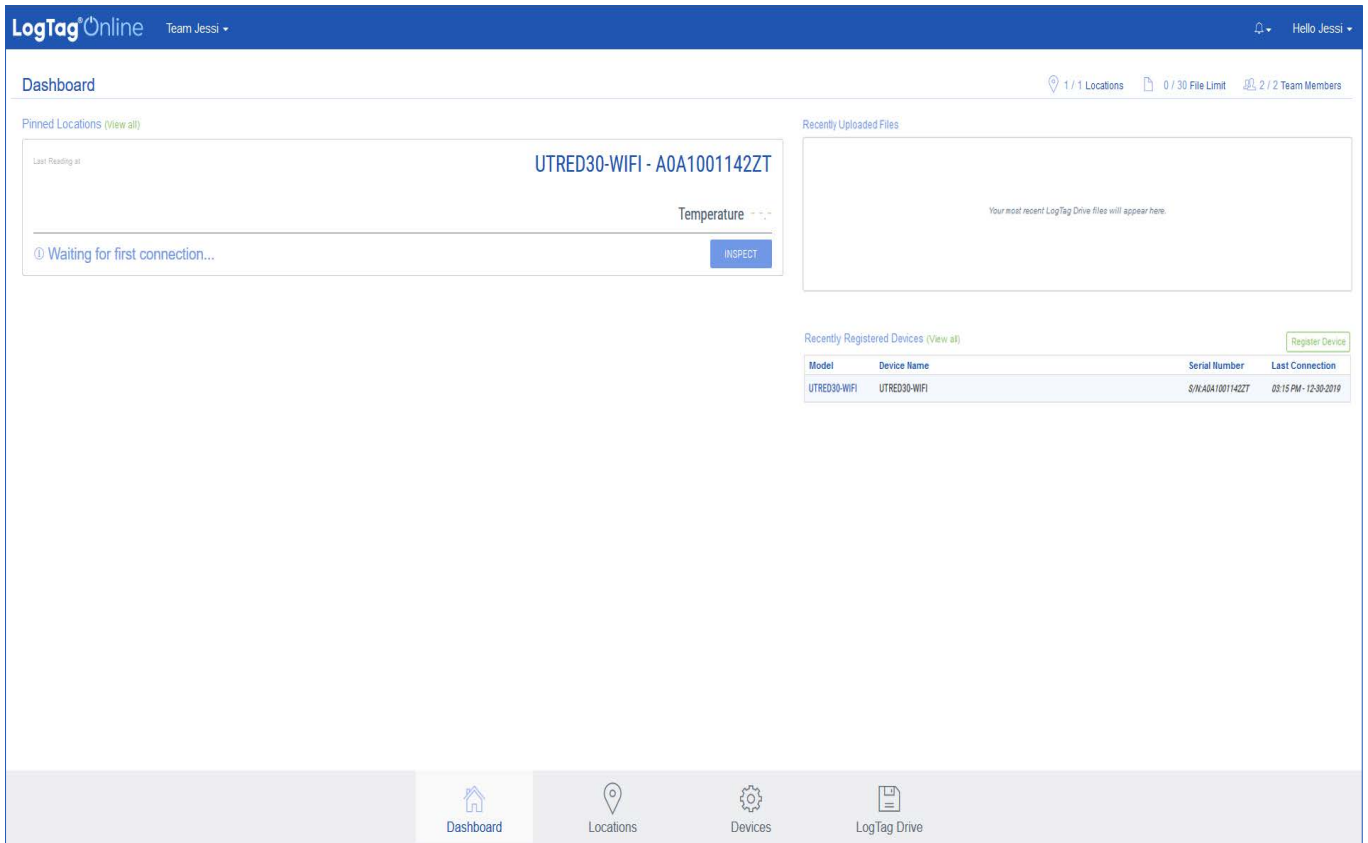
1. Type your Email and Password, then click “Sign In”.

Note: If you did not create an account during the Connection Wizard process, click the ‘Create an Account’ link button and follow the on-screen instructions.

A screenshot of the LogTag Online sign-in page. At the top, there are four language options: "Bienvenido", "Willkommen", "добро пожаловать", and "歓迎". Below this is a sign-in form with the following elements: an "EMAIL" section with a text input field labeled "Email Address"; a "PASSWORD" section with a text input field labeled "Password"; a "Stay signed in" checkbox; a prominent green "SIGN IN" button; a yellow "Create an Account" link; and a red "Forgot your Password?" link. At the bottom right of the form, the version number "1.0.5.6330" is displayed.

Upon signing in, you will see the main Dashboard with the Location automatically created.

If you cannot see the Location, manually register the device by clicking the green ‘Register Device’ button in Devices on the dashboard or in the Devices menu



from the bottom navigation bar.

Once the device is registered, the location is automatically created and will appear in Pinned Locations on the Dashboard or in the Locations section from the bottom navigation bar

For more information about registering Devices or Locations, please refer to the 'Devices' or 'Locations' section in the LogTag Online Quick Start Guide.